

**WINTER 2023**

**TOLLAND  
COMMUNITY**  
*Newsletter*



**Tolland Recreation & Adult Education Programs**

The **CHRONICLE**

# **New England Arborists Tree Care, llc**

**A Higher Standard  
Conservation ♦ Preservation ♦ Restoration**

**Large, Small and Tall Tree Removal  
Bracing & Cabling  
Corrective Pruning  
Diseased Trees  
Fertilization  
Insect & Disease Control  
Organic Soil Treatments  
Residential & Commercial Services  
Storm & Wind Damage Repair  
Stump & Root Grinding  
Tree Installation  
Bucket Truck / Crane Service  
Technical Climbing  
Risk Assessment of Hazardous Trees  
Year-Round Services**



**Damon Collins**  
Office: 860.454.7866  
Mobile: 860.985.6034  
Tolland, CT  
Or Visit: [www.neatc.net](http://www.neatc.net)



**Our Consultations Are Always Complimentary**

License S-5664 / B-2706

TOLLAND COUNTY



**SALES AND SERVICE**

- Steel Insulated Doors
- Rolling Steel Doors
- Garage Door Openers
- Loading Dock Equipment
- Section And Spring Replacement
- Electric Operator Repair

Call today for your free quote  
**860-872-1466**

**New Location:**  
 134 Hartford Tpke, Tolland. Off exit 67

## TOLLAND VETERINARY HOSPITAL

Dr. Laura Roy • Dr. Eran Shemer  
 Dr. Shaleighne McKiernan



70 Hartford Turnpike      Monday–Friday: 9am-6pm  
 Tolland, CT                      Saturday: 9am-1pm

**860-875-5748**

TollandVetHospital.Com

**Proudly Serving the Community  
 for Over 50 Years!**

# Table of Contents

- Town Manager’s Office.....4**
- Contact Information .....4**
- Recreation Department.....6**
  - General Information.....6
  - Park Facilities .....7
  - Tolland Youth Sports Leagues & Groups .....8
  - Rentals .....8
  - Tolland Town Directory .....9
- Recreation Department Programs ..... 11**
  - Preschool Programs ..... 11
  - Youth Programs ..... 12
  - Youth Sports ..... 14
  - Adult Education ..... 15
  - Adult Sports ..... 17
  - Recreation Happenings ..... 18
- Tolland Human Services ..... 19**
  - Assistance Programs ..... 19
  - Senior Center ..... 20
- Tolland Planning & Development..... 21**
- Tolland Public Works department ..... 21**
- Tolland Public Library ..... 22**
  - Adult Programs ..... 22
  - Children/Teen Programs ..... 23
  - Special Events ..... 24
- Tolland Public Safety/Fire Department..... 25**
  - Tolland Fire Marshal ..... 25
  - Tolland Fire Department ..... 26
  - Emergency Management ..... 29
  - Tolland Animal Control ..... 29

Produced by



**Publisher:** Jody Boucher  
**Advertising Manager:** Jan Koivisto  
**Production Manager:** Nonea McFarlane  
**Cover Design & Layout:** Heidi Graf

**To advertise please contact:**  
 Jean Beckley, Sales Representative 860-423-8466 x3305  
 Jackie Gottlieb, Sales Representative 860-423-8466 x3348

# Town Manager's Office

## Targeted Budget Timelines

<b>February 9, 2023 (Thursday)</b>	Capital Budget Public Hearing – Council Chambers* – 7:00 p.m.
<b>February 13, 2023 (Monday)</b>	Board of Education submits Budget to Manager
<b>February 23, 2023 (Thursday)</b>	A. Manager convenes joint meeting between Council and Board of Education (by April 11 per Charter requirement). Recommendations & Suggestions to BOE regarding consolidation of non-education services and cost savings (10 days from date of receiving BOE Budget per State Statutes (Public Act 13-60)) B. Discuss Board of Education budget overall request, pursuant to Charter Section C9-4 or C9-1 – Library Program Room* – 7:00 p.m.
<b>March 8, 2023 (Wednesday)</b>	Manager submits Budget to Council
<b>March 15, 2023 (Wednesday)</b>	Mgr. discusses Budget w/Council–Council Chambers* – 7:00 p.m.
<b>March 16, 2023 (Thursday)</b>	Mgr. discusses Budget w/Council–Council Chambers* – 7:00 p.m.
<b>March 20, 2023 (Monday)</b>	Mgr. discusses Budget w/Council–Council Chambers* – 7:00 p.m.
<b>March 23, 2023 (Thursday)</b>	<u>PUBLIC HEARING</u> on Manager's Recommended Budget: Board of Education, Town Gov't., Capital Improvement Plan – Council Chambers* – 7:00 p.m.
<b>March 28, 2023 (Tuesday)</b>	Council Discussion – Budget Finalized – Council Chambers* – 6:00 p.m.
<b>April 19, 2023 (Wednesday)</b>	<u>ANNUAL BUDGET PRESENTATION MEETING</u> – Council Chambers* – 7:00 p.m. – BOE is provided an opportunity to present a revised adopted budget based on funding approved by Town Council and other line item updates
<b>May 2, 2023 (Tuesday)</b>	Annual Budget Referendum
<b>By May 9, 2023 (Tuesday)</b>	Council Establish Mill Rate upon referendum adoption

\*Meetings may be Hybrid

# Recreation Department

## Contact Information

104 Old Post Road

**Office:** 860-871-3610      **Fax:** 860-870-1367

## Office Hours

**Monday–Wednesday:** 8:00am–4:30pm

**Thursday:** 8:00am–7:30pm

**Friday:** CLOSED

## Mailing Address

21 Tolland Green, Tolland, CT 06084

## Registration Website:

[www.tollandrec.com](http://www.tollandrec.com)

Email: [tollandrec@tollandct.gov](mailto:tollandrec@tollandct.gov)

## Recreation Staff

**Director:** Bruce Watt, [bwatt@tollandct.gov](mailto:bwatt@tollandct.gov)

**Administrative Assistant:** Kim Grimes, [kgrimes@tollandct.gov](mailto:kgrimes@tollandct.gov)

## Recreation Board

Jeff Maron, *Chairman*

David Drost, *Assistant Chairman*

David Clokey

Nicole Kowal

Jennifer Gott-Caldwell

Brian Lievens

James Leahy

The Board meets every second Monday of the month. All meetings are open to The public.

## Activity and Program Pictures

Throughout the year Andre Garant has taken pictures of our activities and programs.

If you would like to see them please go to:

[www.flickr.com/photos/63906149@N02/](http://www.flickr.com/photos/63906149@N02/)  
**Andre Garant-Photography on Demand**

# Serving The Community For 40 Years!

[www.staffordveterinarycenter.com](http://www.staffordveterinarycenter.com)



The Hospital with a Heart!



## ***Our new facility is open!***

We can't wait to welcome you to our new state-of-the-art facility at **42 West Main St in Stafford Springs.**

**We're happy to have been providing quality, convenient, and compassionate care for your dogs, cats, large animals, and exotics since 1981!**

**NOW ACCEPTING  
NEW PATIENTS!**



**Dr. David  
Mordasky**



**Dr. Drew  
Mordasky**



**Dr. Liz  
Nutile**



**Dr. Nicole  
Davies**



**Dr. Bridget  
Johnson**



27 Buckley Highway  
Stafford Springs, CT 06076  
**860-684-5868**

# Recreation Department

## General Information

### Insurance

All persons participating in Recreation programs should carry their own personal health insurance. The Town of Tolland is not responsible for personal injuries. Participants in all Department sponsored programs do so at their own risk.

### ADA

The Town of Tolland does not discriminate on the basis of race, color, national origin, sex, religion, age or disability in provision of programs and services. We are committed to assuring equal access to programs, activities, and services to all individuals. If you or a family member needs special assistance, please let us know when you register.

### Participation

Only those enrolled in the program may attend. Sorry, children will not be allowed in the class room or gym during adult programs and siblings must remain seated and not disturb youth classes.

### Age Requirement

To participate, children must meet minimum age before the class starts.

### Inclement Weather

Program cancellations due to inclement weather are announced via email blasts through the Recreation Department's registration system and are broadcast on Channel 3's Early Warning Announcements.

### Scholarship Programs

It is our policy that residents of the Town of Tolland who cannot afford to participate in programs or activities can make confidential inquiries for assistance to the Recreation Director.

### "Oops!"

Despite our best efforts, errors sometimes make it into this Newsletter. We apologize for any inconvenience these errors may cause."

We reserve the right to: Make changes in price, content, description, etc. at any time without notice.

## Registration Information

### MAIL-IN

Registrations are accepted on a first come/first serve basis. A registration form is available at [TollandRec.com](http://TollandRec.com).

Mail your completed form with payment to:

Tolland Recreation Department  
21 Tolland Green  
Tolland, CT 06084

Consider yourself registered if you do not hear from us.

### ON-LINE

Recreation Dept. Registration Website – [www.tollandrec.com](http://www.tollandrec.com)

Town Website – [www.tollandct.gov](http://www.tollandct.gov)

Participants registering online will be confirmed online.

Not all classes can be registered for online; however you may view all classes.

### INFORMATION

Be sure to complete all information when registering.

### REGISTER EARLY!

If a program does not meet its minimum enrollment number prior to the start of class **it will be cancelled**.

### CLASSES

We reserve the right to limit class size and to cancel classes failing to meet minimum requirements.

### PAYMENT

Registration is not considered valid until the program fee is paid. We accept cash, checks, Discover Card, Visa or MasterCard.

### REFUNDS

Refunds are given only prior to the start of classes or if we cancel the program. Requests for refunds must be in writing and are subject to a \$10.00 processing fee. Programs less than \$15.00 receive an account credit.

## Program Locations

- Crandall Park ..... 64 Cider Mill Rd, Tolland, CT
- Cross Farms Recreation Complex . 167 Rhodes Road, Tolland, CT
- Tolland Recreation Center ..... 104 Old Post Rd, Tolland, CT
- Tolland Tennis Courts ..... Old Cathole Rd, Tolland, CT
- Skungamung River Golf Course ..... 114 Folly Ln, Coventry, CT  
(End of Goose La)
- Youth Garden, (by Lions Field) ..... Cider Mill Rd, Tolland, CT
- Birch Grove School ..... 247 Rhodes Rd, Tolland, CT
- Tolland Intermediate School (TIS) ..... 96 Old Post Rd, Tolland, CT
- Tolland Middle School (TMS) ..... 1 Falcon Way, Tolland, CT
- Tolland High School (THS) ..... 1 Eagle Hill Rd, Tolland, CT

Winter Program  
**REGISTRATION**  
Begins on: Tuesday, DEC. 13, 2022  
Please visit our registration site at  
[www.tollandrec.com](http://www.tollandrec.com)

# Recreation Department



## RIVER PARK

South River Road - 2 Little League size baseball fields, River access.

## HERON COVE PARK

125 South River Road - Small soccer field, multipurpose field, basketball court & canoe launch.



## Park Facilities

All parks are open sunrise to sunset. Dogs are required to be on a leash.

Dogs are **NOT** allowed on athletic fields!!

## CRANDALL PARK

64 Cider Mill Road- 350+ acre Town Park containing 3 tennis courts/ 3 pickle ball courts, a basketball court, softball & baseball fields, a swimming pond, bathrooms, 2.5 miles of marked hiking trails and a picnic area.

## PAVILION

Is an open air shelter with picnic table seating for groups of up to 75. Facilities include a large charcoal grill, horseshoe pits and a sand volleyball court. Use of a softball field is possible depending on availability. Rental by reservation only through the Recreation Office. Call the Recreation office at 860-871-3610 for fee schedule and available dates.



## "THE LODGE"

124 Cider Mill Road- The Lodge is a year round rental facility available to groups of 100 or less for special events such as weddings, showers, picnics, parties or meetings. Rental rates vary for residents, non-residents, and businesses. Building contains Central Air-conditioning, fireplace, tables & chairs, a warming oven, microwave, and double door fridge. For available dates, fees & more information call the Recreation office at 860-871-3610.

## TENNIS COURTS

Old Cathole Road - Six all weather tennis courts across from Tolland Middle School.

## CROSS FARMS RECREATION COMPLEX

167 Rhodes Road - 3 baseball and 3 soccer fields, Hiking Trails, exercise stations, 18 hole disc golf course, concession stand and Adam's Adventure an all-inclusive play structure.

## ALL WEATHER TURF FIELD

1 Eagle Hill Road- A beautiful lighted synthetic turf field at Tolland High School. The field with permanent lines for football, soccer and lacrosse is available to rent for a variety of practices, games and other events. To find out more, call the Recreation Department at

860-871-3610 or go to the web site [www.tolland.org/recreation](http://www.tolland.org/recreation)

The Town of Tolland is an Equal Opportunity Employer—  
[www.tollandct.gov](http://www.tollandct.gov)

## BIRCH MOUNTAIN POTTERY

studio-gallery

*Susan Gerr, Your local potter since 1985!*

**Great Unique Gifts from Your Local Potter**



Featuring an extensive line of beautiful, handcrafted pottery made on the premises. Also, work by area artists and craftspeople.



Follow us on Facebook!

223 Merrow Road, Tolland, CT • (860) 875-0149 • [www.birchmountainpottery.com](http://www.birchmountainpottery.com)

# Recreation Department



## Rentals

### TOLLAND RECREATION CENTER- Room Rentals

104 Old Post Road, Tolland, CT 06084

Rent a room for Parties, Events or Weekend Meetings. Want to have a party for your son or daughter but don't have the space in

your house? The Tolland Recreation Center has rooms available to rent for parties, small gatherings, weekend meetings or similar events. Want a special birthday party? Why not rent our gym? Rooms are available for meetings on a limited basis to non-profit groups at no cost. Call the Recreation Office at 860-871-3610 to get rates and check on availability.

### THE LODGE at CRANDALL PARK II

124 Cider Mill Road, Tolland, CT 06084

A year-round rental facility overlooking Powell Pond; Available to residents, non-residents, businesses, etc. in groups of 100 or less for special events such as weddings, showers, picnics, parties, or meetings. The building contains tables & chairs, a warming oven, microwave, and double door fridge. Built in 1991, it is located in the middle of a 300+ acre town park. Nestled on a wooded hilltop overlooking a quiet pond, its singular design blends with the rustic surroundings to create a warm and serene atmosphere. A covered deck on two sides adds to the down home feeling, while inside a large fieldstone fireplace, a cathedral ceiling, and cedar siding completes the picture. The Lodge is heated for year round use, and is available weekdays, weeknights, or weekends. Call the Recreation Department office at (860) 871-3610 for more information, rental fees and available dates.

#### Amenities:

- Central Air-conditioning
- Kitchen with warming oven, microwave, double door refrigerator (no freezer)
- Two sided field stone fireplace
- Cedar planking on interior walls
- Tables & chairs to accommodate groups of up to 100
- Clean bathrooms
- Sound system with CD player, iPod connection
- Horseshoe pits
- Easy access to hiking trails and fishing pond



## TOLLAND FAMILY PIZZA RESTAURANT

**\$2 OFF \$15**

or more

Expires  
2/28/23

**\$5 OFF \$30**

or more

Expires  
2/28/23

## A GREEK TWIST TO PIZZA & ITALIAN FARE.

225 Merrow Road, Route 195 Tolland, CT 06084  
Monday - Sunday: 11:00AM-9:30PM

(860) 872-0526 • [tollandfamily.rest.com](http://tollandfamily.rest.com)

## Tolland Youth Sports Leagues & Groups

Tolland Boys Travel

Basketball ..... [www.tollandbasketballclub.com](http://www.tollandbasketballclub.com)

Tolland Girls Travel

Basketball ..... [www.tollandtravelbasketball.com](http://www.tollandtravelbasketball.com)

Tolland Lacrosse..... [www.tollandlacrosse.org](http://www.tollandlacrosse.org)

Tolland Little League..... [www.tollandlittleleague.org](http://www.tollandlittleleague.org)

Tolland Soccer Club ..... [www.tollandsoccerclub.org](http://www.tollandsoccerclub.org)

Tolland Youth Football

& Cheerleading ..... [www.tollandeaglesyouthfootball.com](http://www.tollandeaglesyouthfootball.com)

Tolland Garden Paths

Youth Garden ..... [www.tgpyouthgarden@comcast.net](http://www.tgpyouthgarden@comcast.net)



## Tolland Town Directory

DEPARTMENT	PHONE
Animal Control .....	(860) 871-3676
Assessor's Office .....	(860) 871-3650
Building Department.....	(860) 871-3601
Elections Administration .....	(860) 871-3634
Emergency Management .....	(860) 871-3677
Finance Department .....	(860) 871-3653
Fire Department/Ambulance- (Non-Emergency) .....	(860) 871-3677
Fire Chief.....	(860) 871-3674
Fire Marshal .....	(860) 871-3675
Health District/Sanitarian .....	(860) 871-3601
Human Resources .....	(860) 871-3600
Human Services .....	(860) 871-3648
Library .....	(860) 871-3620
Planning & Zoning .....	(860) 871-3601
Police – Lori Sherwood, Secretary .....	(860) 926-4695
Kevin Eklund, Admin. Resident Trooper .....	(860) 875-8911
Probate Court .....	(860) 871-3640
Public Works .....	(860) 871-3696
Recreation Department.....	(860) 871-3610
Senior Services .....	(860) 870-3730
Tax Department.....	(860) 871-3657
(860) 871-3654	
Tolland Tykes Preschool.....	(860) 871-3610
Town Clerk.....	(860) 871-3630
Town Manager's Office.....	(860) 871-3600
Trash & Recycling .....	(860) 926-4695
(860) 871-3600	
Youth Services .....	(860) 871-3612

## A REAL ESTATE PROFESSIONAL WORKING AT YOUR SIDE WILL GO A LONG WAYS!



**COLDWELL BANKER  
REALTY**

**RAPHAEL VERGNAUD**  
REALTOR®

**860-500-3525**

raphael.vergnaud@cbrealty.com



# Recreation Department

TOLLND TYKES PRESCHOOL

## OPEN HOUSE



Thursday, January 19, 2023

6:00- 7:30pm

Ages: 3 & 4

Tolland Recreation Center

Tolland Tykes will be hosting an Open House on Thursday, January 19, 2023.

(snow date Thursday, January 26, 2023)

*Come meet the teachers  
and see what we  
are all about!*

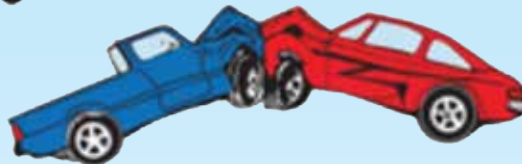
104 Old Post Road, Tolland, CT 06084

## PROGRAM DISCOUNT!

The Tolland Town Council approved ARPA Funding Use to support a 50% reduction on selected Recreational Programs for tolland residents over an approximate year and one half time period. Program fees will be adjusted during the time of check out. Selected discounted programs are indicated below.



JOHNSON AUTO BODY, INC.



Tolland, CT

### WHAT WE CAN DO FOR YOU:

- AUTO BODY REPAIR
- COLLISION REPAIR
- RUSTPROOFING
- PAINTLESS DENT REPAIR
- AUTO GLASS REPAIR
- AND MUCH MORE



### Contact us:



(860) 875-7136



393 Merrow Road  
Tolland, CT 06084



Hours: Monday-  
Friday 8:00 – 5:00

**I-CAR GOLD CERTIFIED**

**STOP IN FOR A FREE ESTIMATE!!! • [www.johnsonautobody.com](http://www.johnsonautobody.com)**

# Recreation Department Programs

## TOLLAND TYKES Preschool

For 3 & 4 Year Olds

Classes begin September 2023

Our 3 year old class meets on Tuesdays and Thursdays from 9:00am to 11:30am, September thru May (32 weeks).

The tuition for this program is \$1150.00 payable in \*two (2) installments (August & January). Children must be 3 years old on or before December 31st.

4 year old class meets on Mondays, Wednesdays & Fridays from 9:00am to 12:00pm,

September through May (32 weeks).

The tuition for this program is \$1,700.00, payable in \*two (2) installments (August & January).

Children must be 4 years old on or before December 31<sup>st</sup>.

We will be holding an open enrollment on a first come first serve basis. To register, fill out our department's registration form and mail to the Tolland Recreation Department, 21 Tolland Green, Tolland, CT 06084, along with your \$100.00 non-refundable deposit to hold your child's place. The deposit will be applied toward your tuition fee.

Registration forms can be found on our department's website at [www.tollandct.gov](http://www.tollandct.gov) or [www.tollandrec.com](http://www.tollandrec.com).

For more information or if you have any questions please check out our website at [www.tollandrec.com](http://www.tollandrec.com) or feel free to contact the Recreation Office at (860) 871-3610.



## Pre-School Programs

### SOCCER SHOTS Mini Program



Soccer Shots Mini designed for 2 year olds. It is a high energy program introducing young children to fundamental soccer principles such as using your feet dribbling and basic rules of the game. Through fun games, songs, and positive reinforcement, children will begin to experience the joy of playing soccer and being active.

Children new to Soccer Shots will receive jersey and all children will receive season prize. No equipment is necessary.

**Day:** Saturdays  
**Date:** January 7- February 11, 2023  
**Time:** 3:00-3:30 pm  
**Ages:** 2  
**Fee:** \$50.00 Res. (discounted fee) / \$110.00 Non-Res. (6 weeks)

**Location:** Tolland Recreation Department

**Participants:** Maximum: 20



### SOCCER SHOTS Classic Program



Soccer Shots Classic is designed for 3 and 4 year old children as an introduction to Soccer. Soccer Shots Classic utilizes creative and imaginative games to focus on basic soccer skills like dribbling, passing and shooting. We also highlight a positive character trait each session such as respect, teamwork and appreciation.

**Day:** Saturdays  
**Date:** January 7- February 11, 2023  
**Time:** 3:45-4:30pm  
**Ages:** 3 & 4  
**Fee:** \$57.50 Res. (discounted fee) / \$125.00 Non-Res. (6 weeks)

**Location:** Tolland Recreation Department

**Participants:** Maximum: 20



# Recreation Department Programs

## Pre-School Programs

### Food Explorers

Join Food Explorers to explore new foods, textures and flavors with a Registered Dietitian! Bring your best or pickiest eaters to this class and take part in interactive games about food and cooking, and make a healthy and delicious snack together. Recipes are nut free but may contain dairy. Parental supervision is required.



**Day:** Wednesday  
**Date:** January 25, 2023  
**Time:** 10:30am-11:30am  
**Ages:** 3-5  
**Fee:** \$12.50 Residents (discounted fee)  
 \$25.00 Non Residents  
**Location:** Tolland Recreation Department  
**Participants:** Minimum: 5  
 Maximum: 15



## Youth Programs

### Babysitter Safety



This course is for youth's age 11 to 17 years of age with the most common age of 12 - 14. This is an entry level course intended to teach age appropriate skills necessary to care for children of all ages using team babysitting, mother's helper and individual babysitting concepts. The course

focuses on safety with emphasis on prevention. Other topics include hand washing, diapering, bottle feeding, and personal safety and interview skills. Basic first aid and obstructed airway management for a conscious choking adult/child and infant will be covered. First Aid including adult and child CPR (requires passing written and skills testing to receive 2 year certification)

Booklet, handouts and Babysitter Safety Certificate of completion included. Bring a snack.

**Instructor:** LifeSafe Services Staff

**Day:** Saturday  
**Date:** February 25, 2023  
**Time:** 9:00am - 2:00pm  
**Ages:** 11-17  
**Fee:** \$90.00 Res/ \$100.00 Non-Res  
**Location:** Tolland Recreation Center  
**Participants:** Minimum: 8 Maximum: 15

### Food Explorers- Chocolate Crazy!



Join Food Explorers newest class: Chocolate Crazy! Each week you'll make a sweet and delicious chocolate treat: milk chocolate, dark chocolate, white chocolate, mini tarts, truffles, chocolate lasagna, and more! Recipes are nut free but may contain dairy and/

or eggs. Participants will be walked from Tolland Intermediate School to the Tolland Recreation

**Day:** Tuesdays  
**Date:** February 28- March 21, 2023  
**Time:** 3:30pm-4:30pm  
**Grades:** 3-5  
**Fee:** \$35.00 Residents (discounted fee)  
 ONLY 4weeks  
**Location:** Tolland Recreation Department  
**Participants:** Minimum: 5 Maximum: 10



MORRISON AND JOHNSON, INC.  
 Family Owned and Operated



391 Merrow Rd.,  
 Tolland, CT 06084  
 860-872-4265

Repairs on  
 All Makes and Models

Complete Automotive Repair Service  
 That You Have Known and  
 Come to Expect for Over 43 Years



Is your Car Road Trip Ready?

Contact Glenn and Holly at Morrison and Johnson today.

Inspection Includes: Tune up • Tires • Brakes  
 • Suspension • Steering • Cooling system  
 • Exhaust system • All Fluids Checked

# Recreation Department Programs



## Building Up S.T.E.A.M. Using LEGO®

Children are working independently and cooperatively as they begin to explore simple machines using LEGO® DUPLO® early childhood materials. Projects may include spin tops, cranes, and hockey players.

- Instructor:** E.Y.E.S., LLC. Staff
- Day:** Mondays
- Date:** January 23 - March 6, 2023 (No Class Feb. 20)
- Time:** 3:45-4:45pm
- Grades:** Kindergarten-2nd
- Fee:** \$90.00 (discounted fee) (6 weeks)
- Location:** Birch Grove Elementary School
- Participants:** Minimum: 8 Maximum: 15

50% Off  
TOLLAND  
Residents  
ONLY



credit: **Sulan Zhang, Tolland High School**

In a recent survey of Tolland middle and high school students\*, 40% said occasionally vaping nicotine posed only 'slight risk' or 'no risk'. **Any vaping poses a risk to your child. Please talk to them.**

*\*2021 Substance Use and Risk Behaviors Assessment*



**FROM YOUR TOLLAND  
LOCAL PREVENTION COUNCIL**

# Recreation Department Programs

## Youth Sports

### FuTSAI Clinic



The Tolland Recreation Department in conjunction with CAB Sports is offering a Futsal Clinic this winter.

Futsal is a sport that is widely popular in South America, and Europe. It is traditionally played as a 5 v. 5, with goalies on a basketball court. Futsal is played with a smaller, low bounce ball and encourages a great touch on the ball, good footwork, and dribbling past a defender. It is gaining popularity in America because many famous players have praised Futsal for developing their playing style. Players such as Lionel Messi, Neymar, and Cristiano Ronaldo. Futsal is one of the fastest growing sports worldwide. The United States is now developing a league which will begin soon. What does a session look like? Every session is broken down into 3 parts; Technical Training, Tactical Training and Game/ Skill Application. Players will engage in game or modified game in order to apply both technical and tactical skills. This is the player's favorite part of the clinic and where they are really encouraged to show the skills they have learned.

#### Tolland Middle School

**Day:** Monday-Friday  
**Date:** March 6 – March 10, 2023  
**Time:** 2:30 - 4:00pm  
**Ages:** Students attending Tolland Middle School  
**Fee:** \$47.50 (discounted fee)  
**Location:** Tolland Middle School  
**Participants:** Minimum: 10 Maimumx 32

#### Tolland Intermediate School

**Day:** Monday-Friday  
**Date:** March 27 – March 31, 2023  
**Time:** 3:30 - 5:00pm  
**Ages:** Students attending Tolland Intermediate School  
**Fee:** \$47.50 (discounted fee)  
**Location:** Tolland Intermediate School  
**Participants:** Minimum: 10 Maximum 32

#### Birch Grove School

**Day:** Monday-Friday  
**Date:** Session 1: January 9 – January 13, 2023  
Session 2: March 20 – March 24, 2023  
**Time:** 3:50 – 5:20pm  
**Ages:** Students attending Birch Grove School  
**Fee:** \$47.50 (discounted fee)  
**Location:** Tolland Birch Grove School  
**Participants:** Minimum: 10 Maximum: 24

## DODGEBALL AFTER SCHOOL



A chance for some after school fun playing the popular game of dodge ball. The players will use super soft foam balls and safety is stressed. Each week different styles of dodgeball are learned. The emphasis will be on teamwork and sportsmanship. Participants will be met at Tolland Intermediate School and be walked up to the Recreation Center.

**Instructor:** Rich Lavigne  
**Day:** Wednesdays  
**Date:** February 1 – March 8, 2023 (No Feb 8, Feb 22)  
**Time:** 3:30-5:00pm  
**Ages:** Grades 3 - 5  
**Fee:** \$25.00 Res. (discounted fee) (4 weeks)  
**Location:** Tolland Recreation Center  
**Participants:** Maximum: 20



# Recreation Department Programs



## Adult Education

### KNITTING CLASS



Beginners, novice, intermediate or expert knitters; this is your class. Bring your problems, questions, or unfinished projects. The basics of knitting will be explored. Casting on, binding off, the knit stitch, the purl stitch, simple knit & purl combinations, simple cables, reading & interpreting patterns & abbreviations. Come join

the fun and learn a thing or two. Materials are covered by the student according to individual patterns. All students will need a skein of worsted weight yarn & needles, size 6, 7 or 8 to practice stitches & techniques.

If you don't have needles, don't buy any until after the first class. We have a very large selection of needles to lend or give away.

- Instructor:** Lori D'Andrea  
**Day:** Tuesdays  
**Date:** January 10 – March 14, 2023  
**Time:** 6:30-8:00pm  
**Ages:** 16 and up  
**Fee:** \$35.00 Res (discounted fee) / \$80.00 Non-Res 10 weeks  
**Location:** Tolland Recreation Center  
**Participants:** Maximum: 15

### ED 2 GO – ONLINE COURSES



Take an online class...and learn on your own terms! Here at the Tolland Recreation Department we offer a wide range of ed2go courses that you can take from the comfort of your own home. All of our courses include expert instructors, many of whom are nationally known authors. Our online courses are affordable, fun, fast, convenient, and geared just for you.

Classes as low as \$95!! Ready to explore our catalog? Visit [www.ed2go.com/TollandRec](http://www.ed2go.com/TollandRec)

### SHAKE IT UP FITNESS



Shake up your routine, shake up your mindset, shake up your goals, shake it up fitness. Show up to a Shake It Up Fitness class exactly how you are; then let loose, be free, shake it up and leave it all on the dance floor. This high energy dance fitness class incorporates cardio, endurance, balance, flexibility and strength with fun upbeat music you'll want to sing along to! In this class you are not just getting a great workout, you are welcomed into a fun community and atmosphere that will challenge you to push your limits, while celebrating how far you've come.

- Instructor:** Marisa Paradis  
**Day:** THURSDAYS  
**Date:** January 5 – March 9, 2023  
**Time:** 6:30-7:30pm  
**Ages:** 16 and up  
**Fee:** \$40.00 Res. (discounted fee) /\$90.00 Non-Res. (10 weeks) or \$10.00 per walk-in  
**Location:** Tolland Recreation Department  
**Participants:** Maximum: 20



Now accepting new patients.

**Wendy C. Ernst, DVM**  
**Kaitlyn M. Way, DVM**

266 Stafford Road  
Mansfield Center, CT 06250



[kirbyveterinaryhospital.com](http://kirbyveterinaryhospital.com)

Call (860) 450-0505  
today to schedule an appointment.

# Recreation Department Programs

## YOGA AM & PM

These classes are moderate, mixed level Kripalu Yoga classes. In the Kripalu approach, we use the tools of yoga - breathing exercises, yoga postures, and meditation - to develop awareness, strength, flexibility, balance, and resilience in the body and mind. I also incorporate some of the principles of Ayurveda, "the science of life", in these classes to give you more tools to create balance, harmony, and vibrant health in your life. Everything can be adapted to suit individual levels. No previous experience with yoga is necessary. Please bring a yoga mat and a blanket or towel to cover up for the final relaxation. Space is limited.

**Instructor:** Amy Evans, RYT-500, AYT

## YOGA – MORNING CLASS

**Day:** TUESDAYS- AM

**Date:** January 10- March 28, 2023

**Time:** 9:00-10:00 am

**Ages:** 16 and up

**Fee:** \$42.00 Res. (discounted fee) / \$94.00 Non-Res., 12 weeks

**Location:** Tolland Recreation Department

**Participants:** Maximum: 20



## YOGA – AFTERNOON CLASS

**Day:** WEDNESDAYS- Afternoon

**Date:** January 11 – March 29, 2023

**Time:** 4:45pm – 5:45pm

**Ages:** 16 and up

**Fee:** \$42.00 Res. (discounted fee) / \$94.00 Non-Res., 12 weeks

**Location:** Tolland Recreation Department

**Participants:** Maximum: 20

## YOGA – EVENING CLASS

**Day:** WEDNESDAYS- PM

**Date:** January 11 – March 29, 2023

**Time:** 6:00-7:00 pm

**Ages:** 16 and up

**Fee:** \$42.00 Res. (discounted fee) / \$94.00 Non-Res., 12 weeks

**Location:** Tolland Recreation Department

**Participants:** Maximum: 20



# SEPTIC SYSTEM SERVICE



INSPECTIONS - REPAIRS - INSTALLATIONS

860-462-3926



SepticologyLLC

septicology.com



# Recreation Department Programs



## Adult Sports

### BASKETBALL- Pick up

The benefits of basketball include great aerobic exercise, it provides a wonderful cardiovascular workout, improves heart health, stamina and lung capacity. The quick movements exercise your joints and muscles and improve strength and flexibility. In other words it provides a complete workout and allows you to meet new people while having fun! Pickup games using multiple courts.

*Register with the Recreation Department for a reduced rate or pay the drop in for \$5.00 an evening. TOLLAND RESIDENTS ONLY.*

**Day:** MONDAYS  
**Date:** January 9 – March 27, 2023  
(No class Jan 16, Feb 20)  
**Time:** 7:00-9:00pm  
**Ages:** 19 and up  
**Fee:** \$40.00 (10 weeks) or \$5.00 per walk-in  
**Location:** Tolland Middle School

**Day:** WEDNESDAYS  
**Date:** January 11 – March 29, 2023  
(No class Jan 25, Feb 22)  
**Time:** 6:30-8:30pm  
**Ages:** 19 and up  
**Fee:** \$40.00 (10 weeks) or \$5.00 per walk-in  
**Location:** Tolland Middle School

### VOLLEYBALL (Coed)

If you are looking for a fun way to improve your health, volleyball could be the sport for you. Join us for coed pickup games, No experience necessary. Our experience instructor will help you learn the game. If you have experience he will help you improve. A good opportunity to meet new people and make new friends.

*Sign up with the recreation department at the reduced rate or pay the drop in rate for \$5.00 an evening.*

**Instructor:** Sue Vang  
**Day:** Mondays  
**Date:** January 9 – March 27, 2023  
(No class Jan 16 or Feb 20)  
**Time:** 7:00-9:00pm  
**Ages:** 16 and up  
**Fee:** \$40.00 Res./ \$50.00 Non-Res. (10 weeks) or \$5.00 per walk-in  
**Location:** Tolland Intermediate School

### VOLLEYBALL (Power)

If you have some experience as a volleyball player this program is for you. Coed pick- up games for fitness and fun. Improve your game and meet new people while getting a good cardiovascular workout. Build muscle and burn fat.

*Sign up with the recreation department at the reduced rate or pay the drop in rate for \$5.00 an evening.*

**Instructor:** Sue Vang  
**Day:** Tuesdays  
**Date:** January 10 – March 21, 2023 (No class Feb 21)  
**Time:** 7:15-9:15pm  
**Ages:** 18 and up  
**Fee:** \$40.00 Res./ \$50.00 Non-Res. (10 weeks) or \$5.00 per walk-in  
**Location:** Tolland Intermediate School



REGISTER ONLINE AT  
[www.tollandct.gov](http://www.tollandct.gov)

# Recreation Department Programs



## PICKLE BALL- OPEN COURT – Pick up



Coed pick-up games for fitness and fun - Are you looking to meet new people, workout, or just have fun? Then Pickle ball is for you! Pickle ball is a racquet sport which combines badminton; tennis and ping pong all in one. **Pickup games only; No instruction provided. REGISTRATION**

**IS REQUIRED. Class limited to 10 participants.**

### BEGINNER LEVEL

**Day:** THURSDAYS  
**Date:** January 12 – March 16, 2023  
**Time:** 1:00-2:30pm  
**Ages:** 55 and up  
**Fee:** \$25.00 Res. (discounted fee)/\$60.00 Non-Res. (10 weeks)  
**Location:** Tolland Recreation Department  
**Participants:** Minimum:4 Maximum: 10

### BEGINNER LEVEL

**Day:** THURSDAYS  
**Date:** January 12 – March 16, 2023  
**Time:** 2:30-4:00pm  
**Ages:** 55 and up  
**Fee:** \$25.00 Res. (discounted fee)/\$60.00 Non-Res. (10 weeks)  
**Location:** Tolland Recreation Department  
**Participants:** Minimum:4 Maximum: 10

### ALL LEVELS

**Day:** THURSDAYS  
**Date:** January 12 – March 16, 2023  
**Time:** 4:30-6:00pm  
**Ages:** 35 and up  
**Fee:** \$25.00 Res. (discounted fee)/\$60.00 Non-Res. (10 weeks)  
**Location:** Tolland Recreation Department  
**Participants:** Minimum: 4 Maximum: 10



## PICKLE BALL – Classes for beginners



These classes are a great way for brand new players to learn the sport of Pickleball. Players receive instruction plus playing time. Players will learn all the basics to be able to play. We will cover equipment, unique lingo, score keeping, court position, and the fundamentals of serve, return, and the volley. These classes are for Individuals ages 35 and older. Indoor Court shoes are required. Pickleball paddles are not provided to use during the classes.

**Instruction:** Richard Lavigne  
**Day:** Mondays  
**Date:** January 9 – February 6, 2023 (No class 1/16)  
**Time:** 11:00am-Noon  
**Ages:** 35 and older  
**Fee:** \$20.00 Res (discounted fee) / \$50.00 Non-Res (4 weeks)  
**Location:** Tolland Recreation Center  
**Participants:** 4 players required, Maximum: 10

## Recreation Happenings

### Letters to Santa



Santa's elves will be collecting letters left in the mail boxes at the Tolland Post Office, Birch Grove School, Tolland Intermediate School and Tolland Library beginning Wednesday, November 30, 2022.

thru Wednesday, December 14, 2022.

It is so hard for Santa to write back when a child doesn't include their FULL NAME & ADDRESS, so please be sure that children include them.



# Tolland Human Services

## Human Services Assistance Programs:

**If you have trouble paying your home heating bills, help may be available.**

Eligibility for the CT Energy Assistance Program is based on annual gross income and household size. Assistance is for your primary source of heating, including oil, electricity, and propane. Renters and homeowners may apply. Renters whose heating costs are included in their rent may also apply.

Maximum Household Income Guidelines - 2022/2023 Program Guidelines*	
1	\$39,761
2	\$51,996
3	\$64,230
4	\$76,465
5	\$88,699
6	\$100,933
7	\$103,227

\*Any household with an individual who receives Cash Assistance, SNAP or Supplemental Security Income will be automatically eligible for CEAP Benefit.

- Residents can apply through **Tolland Human Services** 860-871-3648. Please call in advance to set up an appointment if you would like to meet with someone from Human Services. Tolland seniors can contact Rebecca Ellert at the Senior Center, 860-871-3726. Required documentation is listed on the next page.
- Residents can apply at the **Access Agency** in Willimantic 860-450-7400.

### Tolland Housing Rehabilitation Loan Program

The Tolland Housing Rehabilitation Loan Program provides zero percent interest loans to eligible residents for home repair projects that include, but are not limited to: septic systems, well repair, roofing and siding, structural deficiencies, replacement windows, insulation, ADA improvements, plumbing, electrical and heating systems.

To be eligible, yearly gross income must not exceed amounts listed below:

Number in Family	Household Income
1	\$54,950
2	\$62,800
3	\$70,650
4	\$78,500
5	\$84,800
6	\$91,100
7	\$97,350
8	\$103,630

For an application or for more information, residents who are interested and feel they may be income eligible may contact (860) 871-3648. All information provided to the Tolland Housing Rehabilitation Loan Program will be kept confidential.

### Food Bank

If you are a Tolland resident and your household would benefit from using the Food Bank, please contact 860-871-3615. Distribution is by appointment only, and participation is strictly confidential.

### FoodShare Mobile Food Pantry



The FoodShare Mobile Food Pantry is available in Tolland on alternate Thursdays, 10-10:30 a.m. in the parking lot adjacent to the United Congregational Church of Tolland, 45 Tolland Green. Pre-registration and identification are not required. For more information about

FoodShare, residents may contact FOODSHARE at (860) 286-9999 or the UCC office at (860) 875-4160, or visit the FOODSHARE website, [www.foodshare.org](http://www.foodshare.org).

Residents participating in the program must bring their own bags.

**Transitions  
Salon**

12 Goose Lane • Tolland, CT 06084  
**(860)896-9010**

**Monet's Table**  
Restaurant and Catering

**\$5.00 OFF**

Your Purchase of \$ 25 or more  
**WITH THIS COUPON!**

Not to be combined with any other special offer.  
Expires 1/31/23

**25th year anniversary**

167 Tolland Stage Road, Tolland CT  
**860.875.7244** Debra@monetscatering.com  
Wed - Fri 11:30-2:30  
Saturday Brunch 9-2 [www.MonetsCatering.com](http://www.MonetsCatering.com)

# Tolland Human Services

## HVCC Dial-A-Ride Program

Dial-A-Ride is a transportation program (wheel-chair accessible) for residents who are at least 60 years of age or are disabled. Rides are available to locations in Vernon, Ellington, and Tolland, and to Manchester and South Windsor for medical appointments. All appointments are on a first come, first served basis. You will need to reserve your ride both to the appointment and from the appointment. In order to provide a return ride, you will need to estimate the duration of your stay at your appointment. You may reserve your ride up to 8 weeks in advance. There is an annual \$20.00 registration fee and a \$2.00 donation for each trip. Round trips are \$4.00. You must have exact change. No Passenger will be refused. Call (860) 870-7940 to make a reservation.

## Youth Programming

Please visit the Youth Services pages on the Town website for up to date programming information as it becomes available. For current information about any services for Tolland youth and families, residents may contact Assistant Director of Human Services Maureen Flanagan, (860) 871-3612 or visit <https://www.tolland.org/youth-services>

## Elderly Outreach/Case Management Services

Would you or a loved one benefit from Elderly Outreach/Case Management Services?

Navigating the world of programs and services can be confusing as there are so many options out there. Together, Tolland Elderly Outreach Worker Rebecca Ellert and Tolland Human Services Case Manager Jeanne Pitney have over 50 years of experience working with elders.

Case Management services include:

- An Assessment of the elder's current health, financial and living situation
- Identification of community resources and funding options for home care services such as Transportation, Home Delivered Meals, Insurance, Adult Day Care, Emergency Response Systems etc.
- Developing a Plan of Care based on the client's needs/ situation

## County Line Septic LLC

INSPECTIONS • INSTALLATIONS • REPAIRS • PUMPING

**Full Service Septic  
Company Serving  
Central and Eastern CT.**

**860-331-0444**  
[www.countylineseptic.com](http://www.countylineseptic.com)

- Monitoring of the elders situation

Both Rebecca and Jeanne are Certified Choices Counselors and are available to help you understand your options regarding Medicare including Medigap and Medicare Advantage Plans.

Contact Jeanne at Tolland Human Services (860) 871-3615 or Rebecca at the Senior Center (860) 870-3726 to arrange a consultation.

## Fair Housing Notice



Beverly Bellody, Director of Tolland Human Services, serves as the Fair Housing Officer for the Town of Tolland. The Federal Fair Housing Act prohibits discrimination in the sale, rental and financing of dwellings, and in other housing-related transactions, based on race, color, national origin, sex, religion, familial status or the presence of children, or disability.

Under the Connecticut Fair Housing Act, it is against the law to deny anyone housing based on race, color, national origin, ancestry, sex, religion, familial status or the presence of children, disability, marital status, sexual orientation, age (except minors), lawful source of income, veteran status or gender identity or expression. If you feel your rights have been denied in the equal access to the rental, sale or financing of residential property, please contact Beverly Bellody at (860) 871-3611, Mon.-Wed. 8:00 am-4:30 pm, Thurs. 8:00 am-7:30 pm, closed on Friday.

## Senior Center NEWS

### Center Hours

Monday – Wednesday: 8:30 AM – 4:00 PM

Thursday: 8:30 AM – 6:30 PM

Friday: CLOSED

### Programs we offer:

*Bean Bag Toss, Billiards, Book Club, Cards, Chair Volleyball, Chorus, Dominoes, Jammers, Line Dancing, Lunch, Mahjong, Movies, Pickleball, Ping Pong, Quilting, Cooking Program, and Tech Class!!*

### We also offer the following Health & Wellness programs:

*Exercise, Chair Yoga, Reiki, Foot Care and Blood Pressure & Blood Sugar Clinic!!*

Stop in and see what we have to offer!

Want a newsletter emailed to you?

Email [kkowalyszyn@tollandct.gov](mailto:kkowalyszyn@tollandct.gov) and let us know.

# Tolland Planning & Development

## Building Department

Did you know that many permits can be applied and paid for online? Visit the Building Department webpage and click the Online Permit Center button to start your application. Having proper permits will not only guarantee the work is approved and inspected, but will benefit you if you decide to sell your home. Did you know that homeowner's insurance claims may be denied due to unpermitted home improvements? Our office staff is happy to answer any questions you may have on the permit process.

While you're on the Building Dept. page, check out our many Reference Materials and Links. There is quite a bit of information provided to help you with your home improvement projects,

including swimming pools, decks, additions and more.

With the snow and ice, come many problems for our homes. Residents with direct-vent pellet stoves, boilers, water heaters and furnaces should verify that the intake and exhaust vents are not buried by blowing and drifting snow. Direct-vent appliances are those that don't have a typical chimney system; they often have plastic pipes going through the exterior wall, low to the ground. If these pipes are blocked, deadly carbon monoxide can build up in your home. Please don't become a statistic!

Before the snow arrives, consider calling in professional help to address

any ice dam issues your roof may have had last year. The root cause is usually a lack of ceiling insulation and/or attic ventilation. We always recommend using a competent, licensed and insured contractor for any home improvement project. A professional contractor will take care of the permit requirements for you and will provide peace of mind knowing that the work is done properly and to current code requirements.

If you have questions for Jim Paquin, the Building Official, he is usually available in the office Mon-Thurs, 8:00-10:00 AM and noon-2:00PM. He is also available Thursday evenings from 6:00-7:30PM.

<https://www.tollandct.gov/building-department>

# Tolland Public Works Department

## Winter Parking Bans

Residents are reminded of the winter parking ban in effect from *November 1st through April 15th*. Overnight parking is not allowed on public streets or municipal parking lots between the hours of *midnight and 6:00 AM*. A parking ban may also be declared if a significant snow event is forecast or in progress. For information on whether a parking ban has been declared (beyond the midnight to 6 AM ban) tune to WFSB (CBS), WTNH (ABC), WVIT (NBC) or FOX61.

## Snow Removal



Snow and ice may not be plowed, blown or shoveled into the street. This practice presents a hazard to passing motorists and may contribute to unsafe road conditions. Please remember that you will also be held responsible

for any actions of a contractor hired by you.

## Mailboxes

Your mailbox should be in good repair, firmly attached to a solid post and properly placed so no part of it is over the pavement. It will have to withstand countless tons of flying snow this winter and it may require periodic maintenance. If a mailbox or post is pushed over or damaged as a result of snow or slush coming off a snowplow, it is considered a winter hazard and the Town will not repair or replace the mailbox or post. The height of the bottom of the mailbox to the street should be between 42"-48" and the mailbox door should be 6 to 8 inches back from the front face of the curb or road edge.

## Garbage & Recycling Tote Placement

Residents are reminded that garbage and recycling totes should be placed within 18" of the curb or roadside. Please know that they are to be placed on your property, not in the street. Doing so not only creates a public safety issue but also hinders snow removal operations. The Town is not responsible for damage done to totes by plows.

## Portable Basketball Hoops

Portable basketball hoops and similar items should NOT be in the Town Right-of-Way. The Town is not responsible for damage done by plows to such items left in the Town Right-of-Way.

## Catch Basins & Storm Inlets

Help minimize street flooding by shoveling snow and ice from in front of the storm inlet nearest your house. This includes keeping catch basin grates free of leaves and other debris all year long!

## Sidewalk Clearing

By Town Ordinance, it is the responsibility of owners and occupants of buildings and vacant lots to remove snow, sleet and ice from public sidewalks abutting their property within 24 hours after the storm has concluded. Failure to comply with this ordinance may result in a fine. Please remember that the final snow plow pass is not made until after the storm has concluded. Your cooperation in clearing sidewalks is an essential safety measure for pedestrians using the sidewalks.

## Christmas Trees

Tolland does not offer curb-side pick up of Christmas trees. However, Christmas trees may be dropped off at Crandall's II, near the Lodge driveway, from December 26th through January 26th.

# Tolland Public Library



Please sign up at [tollandct.gov](http://tollandct.gov) and look for the Online Library Events Calendar.

## Ongoing Programs/ Groups

### Friends Meeting



The Friends of the Tolland Public Library meets on the first Monday of the month at

11 am in the library's program room. The group is always looking for new members so just stop in.

### Virtual Meditation

The meditation group meets virtually on the first Tuesday of the month at 6:30 pm. This group is run by Kathy Grinold and is appropriate for beginners and more experienced practitioners.

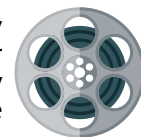
### Tech Help

Do you have questions about your laptop, smartphone, or tablet? The Tolland Public Library is now offering one-on-one tech help appointments. Call 860- 871-3620 to book your personalized session today! Tech appointments will be available on the second Wednesday of the month at 11 am.

We can help you create an email or social media account, set up new devices, download library articles, e-books and magazines and learn to use Microsoft Word.

### Movies

The Tolland Public Library will show movies on either the first or second Saturday of the month at 2 pm in the library's program room.



### Book Discussion

The Adult Book Discussion Group meets on the third Wednesday of the month at 2 pm in the program room. We provide the books and the questions.



## Adult Programs

### Paper organization

On **Tuesday, January 17th** at 6:30 pm Jenna Elliott, professional organizer and founder of the Naked Flower will speak virtually about the paper trail in all its forms, how to be ruthless, more efficient and chase after those hidden piles. Please sign up at [tollandct.gov](http://tollandct.gov) and look for the Online Library Events Calendar. Zoom info will be sent out the afternoon of Jan.17th to registered participants.

### Financial Information

On **Wednesday, January 25** at 6:30 pm, Michael Alimo of USA Financial & Tax Services will present information on social security timing in the library's program room. Choosing when to elect Social Security benefits can be a very important decision as you approach retirement. During this educational workshop the influence of timing strategies on tax liability and overall benefit values will be discussed as will spousal benefits, and widow, divorced and single claiming concepts. Please sign up at [tollandct.gov](http://tollandct.gov) and look for the Online Library Events Calendar.

### Needle Felting



Angelina Fleury is back on **Tuesday, February 7**

at 6 pm with a new needle felting project. The adorable felted penguin needs experienced felters (you must have taken two previous classes with Angelina). Her classes fill up very quickly and this class is limited to 8 participants so don't delay if you are interested. This program is funded by the Friends of the Tolland Public Library. Please sign up at [tollandct.gov](http://tollandct.gov).

[tollandct.gov](http://tollandct.gov) and look for the Online Library Events Calendar.

### Beer program



On **Friday, February 24th** at 6:30 pm Em Sauter will present "Around the World in 80 Beers". Em is an Advanced Cicerone®, a BJCP Certified Beer Judge and has judged many international beer competitions.

This program is informational only – no beer will be served. Please sign up at [tollandct.gov/library](http://tollandct.gov/library) and look for the Online Library Events Calendar.

### Irish Music

On **Sunday, March 12** at 2 pm the Carroll



Sisters will be performing Irish music in the library's program room. Emile and Nora Carroll have loved and played Irish music for over a decade in pubs, farm festivals house and

(pandemic-inspired) driveway concerts, and the Boston Celtic Music Festival. This duet is known for their lively traditional tunes, beautiful harmonies, and unique musical arrangements. Please sign up at [tollandct.gov/library](http://tollandct.gov/library) and look for the Online Events Calendar.

### Puzzle contest

Join us for the third annual jigsaw puzzle competition on **Saturday, March 25** at 2 pm in the library's program room. Ten teams (1 to 4 people) will compete to assemble a 500 piece puzzle. Prizes will be awarded and refreshments will be served.

## Featherweight Friends Club

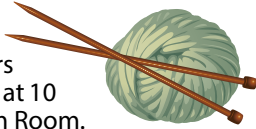
The Featherweight Friends Club meets one Saturday a month at 10 am in the library's program room. Come learn about the featherweight machine and this type of sewing!

## Writers Workshop

The Writers Workshop meets on the third Tuesday of the month at 6 pm in the Audiovisual Room. Participants of this group share their work and receive support from other members.

## Knitters

Nookless Knitters meet every Friday at 10 am in the Program Room.



Nookless Knitters II meet on the second and fourth Wednesday of the month at 6:30 pm in the Audiovisual Room.

## Tech Class

Classes on a variety of tech topics are held on the fourth Thursday of the month at 2 pm in the library's program room. Past classes have covered iPhones, e-books, Pixlr, and Canva.

## Upcoming Children's & Young Adult Programs

**December 2022 + January, February, & March 2023**



## Super Duper Story Time

**Tuesdays, 10:30 - 11:15 AM.**

December 13, 20, & 27  
January 3, 10, 17, 24, & 31  
February 7, 14, 21, & 28  
March 7, 14, 21, & 28

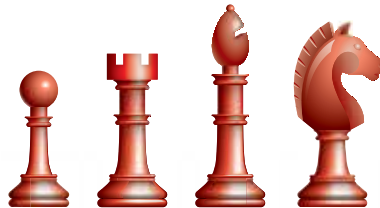
Kids and caregivers are invited to join our children's librarian on Tuesdays for stories, songs, crafts, and oodles of fun! Toddlers & Kids. FREE. Call (860) 871-3621 for more info. Registration required.

## Baby Bookworms

**Wednesdays, 10:30 - 11:00 AM.**

December 14, 21, & 28  
January 4, 11, 18, & 25  
February 1, 8, 22  
March 1, 8, 15, 22, & 29

Join us on Wednesday mornings for board book read-alongs, songs, rhymes, and playtime for your little ones. Infants & Toddlers. FREE. Due to limited space and supplies, registration is required for all participants. Call (860) 871-3621 for more info. Free.



## Chess Club

**Meets Wednesdays, 6:00 - 7:00 PM.**

December 7, 14, 21, & 28  
January 4, 11, 18, & 25  
February 1, 8, 15, & 22  
March 1, 8, 15, 22, & 29

Weekly chess group for kids, pre-teens, and teens. Hosted by Mr. Edward Faber. Players should know basic chess moves before joining the group. Registration is required. Kids, Pre-Teens, & Teens. Free. Call (860) 871-3621 for more info.



## LEGO Club

**Meets on the 2nd & 4th Thursday of Every Month, 4:00 - 4:45 PM.**

December 8 & 22  
January 12 & 26  
February 9 & 23  
March 9 & 23

Attention LEGO lovers! Exercise your creativity, show off your skills, and attempt awesome challenges online. Meets on the 2nd and 4th Thursday of every month. Kids & Pre-Teens. FREE. Call (860) 871-3621 for more info. Registration required.

## Tech Time

**Meets Once a Month on a Saturday, 12:00 PM - 1:00 PM.**

December 24  
January 7  
February 18  
March 4

Get hands-on with some of the amazing technology available at the library and have a STEM-tastic time! Ozobots, iPads, video games, and more. Kids, Pre-Teens, & Teens. Free. Call (860) 871-3621 for more info. Registration required.



## Anime / Manga Club

**Meets Once a Month on a Wednesday, 4:00 - 4:45 PM.**

December 14  
January 18  
February 15  
March 15

Practice manga-style art, eat exotic snacks, fold origami, watch, read, and discuss your favorite anime and manga. Pre-Teens & Teens. Call (860) 871-3621 for more info. FREE. Registration required.

## Teen Library Council

**Meets the Last Wednesday of Every Month, 4:00 - 4:45 PM.**

December 28  
January 25  
February 22  
March 29

Motivated and dedicated teens wanted! Design your own library programs and web content. Personalize the Teen Area. Have a say in the books and movies that you want in the library. If you're a teen, ages 13-19, your opinions matter and we want you to share! Join us on the last Wednesday of every month. Registration is required. Call (860) 871-3621 for more info. FREE.



# Tolland Public Library

## Dungeons & Dragons

**Thursdays, 6:00 - 7:30 PM.**

January 5, 12, 19, & 26  
February 2, 9, 16, 23

Grab a character sheet and a set of dice and embark on an epic quest designed by local Dungeon Master extraordinaire, Jerry Rapone of "The Winding Way Forward Tabletop Adventures"! Experienced players and DMs are welcome to join and run their own games. Registration is required. Players should have a basic understanding of how to play before joining. Pre-teens & Teens. Call (860) 871-3621 for more info.



## Special Events

### Gingerbread Houses

**Saturday, December 10, 12:00-1:00 PM.**

Build your own "Gingerbread House" out of graham crackers, frosting, and candy! Kids, Pre-Teens, & Teens. Free. Call (860) 871-3621 for more info.



### Holiday Card Decoration & Movie

**Saturday, December 24. 12:00 - 2:30 PM.**

Enjoy a holiday crafternoon at the library

as we decorate beautiful Christmas, Hanukkah, & Kwanzaa. These make wonderful (and inexpensive) gifts for your loved ones. Watch a special holiday movie and enjoy snacks as you decorate. All ages. FREE.

### National Hot Sauce Day Trivia Challenge

**Saturday, January 21, 12:00 PM.**

Looking for the perfect way to warm up this winter? Celebrate National Hot Sauce Day with us and attempt our very own *spicy* take on the "Hot Ones" trivia model. Put your pop culture knowledge and your taste buds to the test! Teens ages 13+ only. Registration required. FREE. Call (860) 871-3621 for more info.



### Take Your Child to the Library Day

**Saturday, February 4, All Day.**

Take Your Child to the Library Day (TYCLD) is an international initiative that encourages families everywhere to take their children to their local library. Join us as we celebrate the 12th anniversary with a special story time @ 10:30 AM, crafts, and more fun for all ages. FREE. Call (860) 871-3621 for more info.

### Valentine's Day Cookie Decoration

**Tuesday, February 14, 4:00-4:45 PM.**



Decorate delicious cookies for a loved one or treat yourself to a tasty holiday snack! Kids, Pre-Teens, & Teens. Registration required. Free. Call (860)

871-3621 for more info.

### Read Across America Day / Dr. Seuss Day

**Thursday, March 2, All Day.**

Celebrate the love of reading! Visit the library for a variety of reading and Dr. Seuss-themed activities. All ages. All day. Call (860) 871-3621 for more info. FREE.



## Mario Kart Tournament

**Friday, March 10, 3:45-4:45 PM.**

MAR10 is International Super Mario Day. Celebrate at the library with a Mario Kart tournament! Sign up and reserve your spot on the bracket if you would like to race. Spectators are welcome to watch, cheer, and enjoy a variety of Nintendo crafts. Registration is required to race. For more info, call (860) 871-3621. Kids, Pre-Teens & Teens. FREE.



### Blindfold Taste Test Challenge

**Saturday, March 18, 12:00 PM.**

Are you a super taster? Can you successfully guess mystery ingredients? Can you handle the "Gross Out" round? Compete against friends and win prizes! Pre-Teens & Teens. Registration required. Free. Call (860) 871-3621 for more info.



## Tolland Fire Marshal

### Winter Holiday Safety

Winter holidays are a time for families and friends to get together. But that also means a greater risk for fire. Following a few simple tips will ensure a happy and fire-safe holiday season.



#### Holiday decorating:

- Be careful with holiday decorations. Choose decorations that are flame resistant or flame retardant.
- Keep lit candles away from decorations and other things that can burn.
- Some lights are only for indoor or outdoor use, but not both.
- Replace any string of lights with worn or broken cords or loose bulb connections. Read manufacturer's instructions for number of light strands to connect.
- Use clips, not nails, to hang lights so the cords do not get damaged.
- Keep decorations away from windows and doors.

#### Holiday entertaining:

- Test your smoke alarms and tell guests about your home fire escape plan.
- Keep children and pets away from lit candles.
- Keep matches and lighters up high in a locked cabinet.
- Stay in the kitchen when cooking on the stovetop.
- Ask smokers to smoke outside. Remind smokers to keep their smoking materials with them so young children do not touch them.
- Provide large, deep ashtrays for smokers. Wet cigarette butts with water before discarding.

#### Before Heading Out or Going to Bed:

- Blow out lit candles when you leave the room or go to bed. Make sure they don't re-light.
- Turn off all light strings and decorations before leaving home or going to bed.

#### Facts:

- More than one-third of home decoration fires are started by candles!
- More than two of every five decoration fires happen because decorations are placed too close to a heat source!

Information used with permission from National Fire Protection Association (NFPA). Visit [www.nfpa.org/education](http://www.nfpa.org/education) for additional topics.



### Fire Safety during Winter Storms

Winter storms can happen almost anywhere. They can cause us problems. Know what to do before, during and after a storm. This will help keep you and your family safe from a winter fire.

- Test all smoke alarms. Do this at least once a month. This way you will know they are working. Install carbon monoxide alarms in your home. Test the alarms.
- Plan two ways out of the home in case of an emergency.
- Clear driveway and front walk of ice and snow. This will provide easy access to your home.
- If your furnace uses a direct-vent system, be sure it clear of ice and drifting snow.
- Make sure your house number can be seen from the street. If you need help, firefighters will be able to find you.
- Be ready in case the power goes out. Have flashlights on hand. Also have battery-powered lighting and fresh batteries. Never use candles.
- Stay aware of winter weather. Listen to the television or radio for updates. Watch for bulletins online.
- Check on neighbors. Check on others who may need help.
- Generators should be used outdoors. Keep them away from windows and doors. Do not run a generator inside your garage, even if the door is open.
- Stay away from downed wires. Report any downed wires to authorities.
- Be ready if the heat stops working. Use extra layers of clothes and blankets to stay warm. If you use an emergency heat source, keep anything that can burn at least 3 feet away.
- Turn portable heaters off when you leave the room. Turn them off when you go to bed.

#### Important Reminder:

There are more home fires in winter than in any other season. Half of all home heating fires happen in December, January and February.

As you stay cozy and warm this winter season, be fire smart!

#### Fact:

Nearly half of all space heater fires involve electric space heaters.

Information used with permission from National Fire Protection Association (NFPA). Visit [www.nfpa.org/education](http://www.nfpa.org/education) for additional topics.

# Tolland Public Safety/Fire Department

## Safety in Places of Public Assembly

Every day, millions of people wake up, go to work or school, and take part in social events. But every so often the unexpected happens: an earthquake, a fire, a chemical spill, an act of terrorism or some other disaster. Routines change drastically, and people are suddenly aware of how fragile their lives and routines can be. Each disaster can have lasting effects — people may be seriously injured or killed, and devastating and costly property damage can occur. People entering any public assembly building need to be prepared in case of an emergency.

### Before You Enter:

- **Take a good look.** Does the building appear to be in a condition that makes you feel comfortable? Is the main entrance wide and does it open outward to allow easy exit? Is the outside area clear of materials stored against the building or blocking exits?
- **Have a communication plan.** Identify a relative or friend to contact in case of emergency and you are separated from family or friends.
- **Plan a meeting place.** Pick a meeting place outside to meet family or friends with whom you are attending the function. If there is an emergency, be sure to meet them there.

### When You Enter:

- **Take a good look.** Locate exits immediately when you enter a building you should look for all available exits. Some exits may be in front and some in back of you. Be prepared to use your closest exit. You may not be able to use the main exit.
- **Check for clear exit paths.** Make sure aisles are wide enough and not obstructed by chairs or furniture. Check to make sure your exit door is not blocked or chained. If there are not at least two exits or exit paths are blocked, report the violation to management and leave the building if it is not immediately addressed. Call the local fire marshal to register a complaint.
- **Do you feel safe?** Does the building appear to be overcrowded? Are there fire sources such as candles burning, cigarettes or cigars burning, pyrotechnics, or other heat sources that may make you feel unsafe? Are there safety systems in place such as alternative exits, sprinklers, and smoke alarms? Ask the management for clarification on your concerns. If you do not feel safe in the building, leave immediately.

### During an Emergency:

- **React immediately.** If an alarm sounds, you see smoke or fire, or some other unusual disturbance immediately exit the building in an orderly fashion.
- **Get out, stay out!** Once you have escaped, stay out! Under no circumstances should you ever go back into a burning building. Let trained firefighters conduct rescue operations.

**FACT:** A fire at The Station nightclub in W. Warwick, RI, on February 20, 2003, claimed 100 lives and is the fourth-deadliest nightclub fire in U.S. history. Since that fire, NFPA has enacted tough new code provisions for fire sprinklers and crowd management in nightclub-type venues. Those provisions mark sweeping changes to the codes and standards governing safety in assembly occupancies.

Information used with permission from National Fire Protection Association (NFPA). Visit [www.nfpa.org/education](http://www.nfpa.org/education) for additional topics.



## Tolland Fire Department:

### Is Your Street Number Visible from the Road?

Residents and Business Owners are asked to please check their street address numbers. Can they be seen from the road? Are they faded, too small, overgrown or missing? If so, please update your numbers so that they are visible from both directions. The Fire Department offers blue reflective street address signs for \$16. The signs measure 6" wide and 18" long, your house numbers are placed on both sides and the blue coating is also reflective. These signs will make your address easier to find and they also make great gifts! For an order form please visit [www.tollandfire.org](http://www.tollandfire.org), click the Forms button. Questions? Call 860-871-3677 x 72158.

An advertisement for Red Rock Restaurant. At the top, it says "Red Rock Restaurant" in white text on a black background. Below that, the text "Hectic Holiday?" is written in a large, green, cursive font. To the right of this text is a gold bell with a red ribbon. Below the text, a chef in a white uniform and hat is smiling and holding a white gift certificate with a red ribbon. The text "LET US DO THE COOKING FOR YOU!" is written in red, bold, capital letters. Below that, it says "Serving Lunch &amp; Dinner Weekly Specials &amp; Kids Club Menu" in black. The word "CATERING" is written in green, bold, capital letters. Below that, it says "for any Group or Gathering Small to Large • Casual to Formal Appetizers • Dinners • Platters • Salads • Wings" in black. The text "Ask us about our new options for EXPRESS CATERING" is written in black, bold, italicized font. Below that, it says "NEW mobile app, contactless delivery, convenient online ordering and curbside pickup. On-Line ordering @ www.redrockcafe.net" in red, bold, italicized font. At the bottom, it says "591 Middle Turnpike (Rte. 44) • Storrs, CT 06268 860-429-1366" in white, bold, capital letters on a red background.

## Smoke Alarm Sense



Install and maintain smoke alarms on EVERY level of your home, outside each sleeping area and inside each bedroom. For the best protection, interconnect the alarms. When one sounds, they all sound. TEST all smoke alarms MONTHLY.

### Replacing your smoke alarms:

- Replace all smoke alarms when they are 10 years old. To determine the age of your smoke alarm, look at the back where you will find the date of manufacture. Smoke alarms should be replaced 10 years from the date of manufacture.
- Immediately replace any smoke alarm that does not respond properly when tested.
- Replace combination smoke-carbon monoxide alarms according to the manufacturer's recommendations.

## Carbon Monoxide

Often called the invisible killer, carbon monoxide is an odorless, colorless gas created when fuels (such as gasoline, wood, coal, natural gas, propane, oil, and methane) burn incompletely. In the home, heating and cooking equipment that burn fuel are potential sources of carbon monoxide. Vehicles or generators running in an attached garage can also produce dangerous levels of carbon monoxide.

### Facts:

- The dangers of CO exposure depend on a number of variables, including the victim's health and activity level. Infants, pregnant women, and people with physical conditions that limit their body's ability to use oxygen (i.e. emphysema, asthma, heart disease) can be more severely affected by lower concentrations of CO than healthy adults would be.
- A person can be poisoned by a small amount of CO over a longer period of time OR by a large amount of CO over a shorter amount of time.
- Be sure to clear snow and ice from around direct vent furnace exhausts
- Do not run generators inside of any type of enclosure. Generators should only be outside.

## Wood & Pellet Stove Safety



We strongly advise to have all heating sources/systems inspected and maintained by a certified, licensed and insured professional. Preventative maintenance can protect your family from disaster. Heating equipment is one of the leading causes of home fires during the winter months and you can avoid being part of that statistic with preventative maintenance.

### Tips to help keep you safe:

- Have a QUALIFIED professional install stoves, chimney connectors, and chimneys.
- Stoves should be listed by a qualified testing laboratory.

- In wood stoves, burn only DRY, seasoned wood. Never burn trash or other materials.
- In pellet stoves, burn only dry, seasoned wood pellets.
- Have your chimney and stove INSPECTED and cleaned by a certified chimney sweep every fall, just before heating season.
- CLEAN the inside of your stove periodically using a wire brush.
- Keep a CLOSE EYE on children whenever a wood or pellet stove is being used. Remind them to stay at least 3 feet away from the stove.
- Stoves need SPACE. Keep anything that can burn at least 3 feet away from the stove.
- INSTALL and maintain **carbon monoxide alarms** (CO) outside each sleeping area and on every level of the home. For the best protection, interconnect the CO alarms. When one sounds, they all sound.
- Allow ashes to COOL before disposing of them. Place cooled ashes in a **covered metal container. Place the container at least 10-15 feet away from your home, other structures, landscaping and trees.**



Hebron • Mansfield

- Roa Alammari MD, FACOG
- Robert Gildersleeve MD, FACOG
- Lesley Gumbs MD, FACOG
- Veronica Helgans MD, FACOG
- Yvette Martas MD, FACOG
- Shannon Morgan CNM, DNP
- Stephanie Welsh CNM, DNP
- Lauren Startz CNM, DNP

## Lifelong Women's Healthcare

Adolescence • Pregnancy • Menopause

860-450-7227 (phone) • 860-450-7231 (fax)



Find us on Facebook  
www.Mansfieldobgyn.com

# Tolland Public Safety/Fire Department

## Escape Planning



Create a home escape plan AND practice it with all family members!

**Your ability to get out depends on advanced warning from smoke alarms and advanced planning.**

Fire can spread rapidly through your home, leaving you as little as one or two minutes to escape safely once the alarm sounds. A closed door may slow the spread of smoke, heat and fire. Install smoke alarms in every sleeping room and outside each separate sleeping area. Install alarms on every level of the home. Smoke alarms should be interconnected. When one sounds, they all sound.

- Bring together everyone in your household and make a plan.
- Walk through your home and inspect all possible exits and escape routes.
- Households with children should consider drawing a floor plan of your home, marking two ways out of each room, including windows and doors. Also, mark the location of each smoke alarm.

## For easy planning:

- Draw a map of your home. Show all doors and windows
- Visit each room. Find two ways out.
- All windows and doors should open easily. You should be able to use them to get outside.
- Make sure your home has smoke alarms. Push the test button monthly to make sure each alarm is working.
- Pick a meeting place outside. It should be in front of your home.
- Everyone will meet at the meeting place.
- Make sure your house or building number can be seen from the street.
- Talk about your plan with everyone in your home.
- Teach everyone to dial 9-1-1.
- Practice your home fire escape drill!

## Help Us Help You!

Tolland Fire Department is currently seeking additional volunteers. Emergency Medical Technicians (EMTs) and Firefighters are wanted to join our volunteer ranks.

If you reside in Tolland and are interested in becoming a volunteer EMT or Firefighter please visit the Department's website [www.tollandfire.org](http://www.tollandfire.org) look for the Become a Member section on the right side of the page and click "join us" for more information.

Thank you in advance for Helping Us Help You!



## STATE LAW: Move Over or Slow Down for Stopped Emergency Vehicles

Flashing red, blue and yellow lights are a familiar sight on highways and Emergency Responders (Police, Fire and Tow Truck Operators) are asking motorists to "Move Over" and "Slow Down" to provide enough room for them to safely do their jobs. When lights are flashing Emergency Responders are working in extremely hazardous and sometimes stressful conditions using very limited space. Close calls are beginning to become the norm as motorists speed by emergency scenes. A split second could mean the difference in everyone going home safely or a responder being injured or killed.

Drivers are reminded that they must move over one lane and slow down if they see emergency vehicles and tow trucks stopped on the highway with their lights flashing. If all lanes are full and drivers can't move over, they are required to slow down as they pass the scene. Connecticut passed its Move Over law in 2009, fines for breaking the law start at \$181.

**NEED BRAKES**  
**NEED AN OIL CHANGE**  
**NEED A TUNE-UP**  
**NEED TIRES**  
**NEED A RENTAL CAR**  
**NEED SNOW TIRES**

**WE DO IT ALL!!**

**Call the professionals at:**  
**Tony's 860-429-0001**  
**Open Monday-Friday 8-6**

**1856 Storrs Rd., Storrs CT**  
**1 mi. North of Route 44**  
**(860) 429-0001**  
email: [tony.s.garage@snet.net](mailto:tony.s.garage@snet.net)  
**Fax: (860) 429-5954**  
[www.tonysgarage.com](http://www.tonysgarage.com)

# Tolland Public Safety/Fire Department

## Tolland Emergency Management

### TOLLAND ALERT – An Emergency Notification System

Get alerted about emergencies and other important community news by signing up for Tolland Emergency Alert, our Emergency Notification Program. This emergency notification system enables Tolland Public Safety officials to provide you with critical information quickly in a variety of situations, such as severe weather, unexpected road closures, missing persons, and evacuation of buildings or neighborhoods. This Emergency Notification Program is independent from "Tolland Notifications" (formerly E-Blast) the Town's routine community email delivery system.

Once signed up, you will receive time-sensitive messages wherever you specify, such as your home, cell, or business phone, email, text messages, hearing impaired receiving devices, and more. You pick where, you pick how.

To sign up please visit [www.tollandfire.org](http://www.tollandfire.org) and click on the Tolland Emergency Alert button.

Once you click the button scroll to the bottom of the page to find **"Don't have an account? Sign up"**

1. Click "Sign up" to create your profile. Please retain your profile information in order to update your account in the future. We do not have access to profiles.
2. Once you have created your profile, you will be asked to select how you'd like to receive Alerts (Telephone/Text/Email). Choose the method in which you wish to receive alerts AND the order in which you would prefer to receive them.\*
3. Next you will be able to choose the Tolland location(s) that are important to you. Such as your home address, your child's school address, etc. You may add multiple Tolland addresses.
4. Next you will be asked to select ALL Important Community Alerts or only specific types of alerts which may be of interest to you.
5. Click Finish

\*Please Note: Once you've selected the methods in which you wish to receive Alerts (Phone/Text/Email) when you begin to receiving Alerts, the system will continue to send the alert to your 2nd and 3rd choices until you reply that you received the message. We ask that you please reply when you receive the message. Data/text messaging rates from your carrier may apply.

The information that you provide will be used for notification purposes only. We will not distribute your telephone numbers or email addresses to any vendors or other organizations.



## Tolland Animal Control

### PA 22-59 - AN ACT CONCERNING THE TETHERING AND SHELTERING OF DOGS

**EFFECTIVE DATE:** October 1, 2022

**SUMMARY:** This act creates requirements for adequate dog sheltering during certain adverse weather and outdoor conditions and applies additional requirements for dog tethering.

The act requires that a dog be given adequate shelter, as defined by the act, when the dog is outdoors for more than 15 minutes and either of the following occurs: (1) the National Weather Service (NWS) issues a weather advisory or warning or (2) adverse outdoor environmental conditions (e.g., extreme heat or cold) pose a risk to the dog's health or safety, based on the dog's breed, size, age, coat thickness, or physical condition. The act waives the requirement when the dog is in the presence of someone who is outside during the same weather warning or advisory or exposed to the same environmental conditions.

Prior law prohibited tethering a dog outdoors to a stationary object or mobile device for more than 15 minutes when (1) local, state, or federal authorities issue a weather advisory or warning or (2) adverse conditions pose a risk to the dog's health or safety based on the dog's breed, age, or physical condition. The act requires (1) the weather advisory or warning to be from the NWS



62 Merrow Rd. Tolland • 860-871-7577  
186 West Stafford Rd. Stafford • 860-684-4208

**Wheeler's  
Auto Parts**

**Family Owned • Knowledgeable  
Staff and Friendly Service**



**Come in for your winter supplies!**

- De-icer • Starting fluid • Dry gas
- Snow brushes • Diesel anti - gel

Open 7 days Mon-Fri 7:30-5:30 • Sat 8-4  
Sunday: Tolland 9-3 & Stafford 9-12

# Tolland Public Safety/Fire Department

and (2) consideration of the dog's size and coat thickness. It also prohibits tethering a dog to a stationary object or mobile device (e.g., trolley or pulley) without providing it potable water at least twice in each 24-hour period.

Anyone who violates these sheltering and tethering requirements is subject to a fine of \$100 for a first offense, \$200 for a second offense, and between \$250 and \$500 for a third or subsequent offense. This is the existing penalty for violations of the state's tethering law.

Lastly, the act makes technical and conforming changes.

**ADEQUATE SHELTER SCOPE** Under the act, "adequate shelter" is a structure that meets each of the following criteria:

1. provides natural or artificial light during daylight hours;
2. offers enough space for a dog to sit, lie down, and turn;
3. is soundly built, kept in good repair, and without accumulated animal waste, debris, and moisture (e.g., standing water and mud) both inside and in the shelter's immediate vicinity;
4. provides access to potable water at least twice in each 24-hour period;
5. has no space heater or wood- or fuel-burning equipment for space heating;
6. is not (a) under exterior stairs or (b) under or inside a motor vehicle; and

7. the floor, if built with wire or metal chain links, has appropriately sized links so that a dog's paws cannot be caught in them.

The structure must also, during extreme outdoor heat, provide enough shade and ventilation for a dog to maintain normal body temperature. And during cold outdoor weather, a shelter must (1) be raised at least two inches off the ground and sufficiently enclosed and insulated to allow a dog to maintain normal body temperature, (2) have a solid roof and walls and a wind-protected opening for entry and exit, and (3) have dry bedding.

Substitute House Bill No. 5170 Public Act No. 22-59 can be read in its entirety by visiting <https://www.cga.ct.gov/2022/act/pa/pdf/2022PA-00059-R00HB-05170-PA.pdf>

## With the winter now upon us, Tolland Animal Control would like to remind dog owners of some very important issues:

- Dogs should not be left outdoors in frigid temperatures for more than enough time to eliminate, unless the dog is being exercised such as running/playing in the yard or going for a jog/walk with their owner. Although most dogs do have an undercoat to help keep them warm, not all do and they can quickly become hypothermic. Dogs of all coat lengths can also get frostbite, most especially on the ears, toes and tail where their circulation is not as good. If you think your dog has become hypothermic or frostbitten, immediately get them into a heated vehicle and to a veterinarian.
- We ask that you be thoughtful during extreme cold/ weather conditions and keep in mind your dog's breed, age, and physical condition when he or she is allowed outdoors. While a young Alaskan Malamute or Husky may enjoy playing outdoors for a little longer period of time, a Chihuahua or Pit Bull type and older dogs may not.
- We recommend that cats be brought indoors during severe weather. If you have feral or outdoor only cats, it is highly recommended to provide a shelter with insulation and straw bedding for them to escape the wind and cold.
- We recommend that livestock should have a shelter with a "wind break", and we suggest a "run in" shed if you don't have a barn. Also, we suggest an approved heater for water buckets which will prevent freezing and save you from continuously having to thaw and refill water buckets.
- We'd like to remind all dog owners to check to be sure their dog licensed is for the current year. Dogs age six months and older are required to be licensed. Licenses are available in the Town Clerk's Office located in Town Hall during regular business hours. Hours are Monday, Tuesday, Wednesday 8:00 AM to 4:30 PM, Thursday 8:00 AM to 7:30 PM, Friday closed. Proof of current rabies vaccination is required. If you no longer own or the dog or the dog is deceased, please contact Animal Control by calling 860-871-3676 to update our licensing database.
- If you have any concerns for animals being left outdoors for long periods of time in below freezing temperatures/wind chills or need assistance or advice, please contact Tolland Animal Control at 860-871-3676.



**CAD Marshall Framing**  
Professional Picture Framer

**30% off**

Art Supplies and  
Readymade  
Frames  
in Stock!

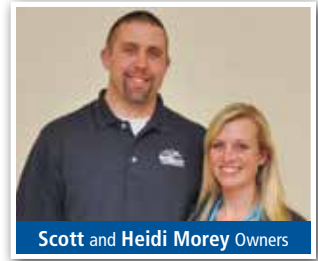
Have a Joyous  
Holiday to All!

860-617-5422  
Tue.-Fri. 10-5:30 & Sat. 10-4  
34 North Street, Wmtc., CT



**We are committed to providing your animals with the highest quality care possible.**

Small Animal Medicine and Surgery  
Large Animal & Equine Farm Calls



**STAFFORD**  
73 West Stafford Rd,  
Stafford Springs CT 06076  
**(860) 971-7300**



**TOLLAND**  
9 Fieldstone Commons,  
Tolland, CT 06084  
**(860) 870-8701**



**ASHFORD**  
118 Ashford Center Rd,  
Ashford, CT 06278  
**(860) 487-0479**

[www.fentonrivervet.com](http://www.fentonrivervet.com)



Town of Tolland  
21 Tolland Green

STD  
US POSTAGE PAID  
HARTFORD, CT  
PERMIT NO. 5126

\*\*\*\*\*ECRWSS\*\*\*\*\*

POSTAL CUSTOMER

Tolland, CT 06084

# Fitness

*New* Cardio Equipment  
*New* Group Training Equipment

Private Personal Training  
Small Group Training



Group Fitness Classes



# Aquatics



Swim  
Lessons  
Aqua Classes

Birthday Parties



**Dome**  
Soccer & Flag  
Football leagues



Volleyball



Basketball



Star Hill / CFC U8, U9,  
& U10 Developmental  
Leagues & Clinics

100 Gerber Drive, Tolland

860-871-8800

[www.starhillsports.com](http://www.starhillsports.com)